

FOR THE FULL BAND

TREBLE CLEF

TIME SIGNATURE

WHOLE NOTE

WHOLE REST


4/4 = 4 counts in each measure

Ledger Line

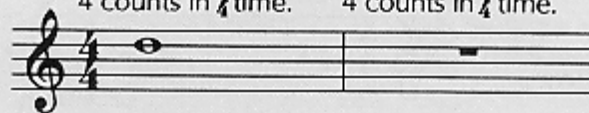
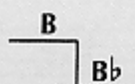
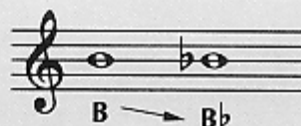
Bar Lines

Staff

Measures

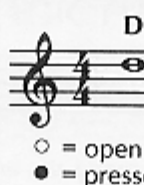
A whole note gets 4 counts in 4/4 time.

A whole rest gets 4 counts in 4/4 time.


FLAT


A flat (b) lowers the pitch of a note one half step. It remains in effect for the entire measure.

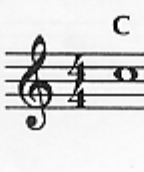
1 TIME FOR BAND



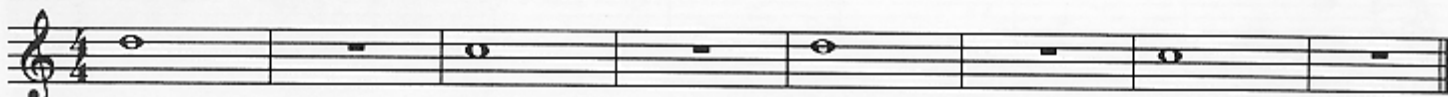
○ = open
● = pressed down

▶ A double bar line marks the end of the music.

2 THE FUN CONTINUES



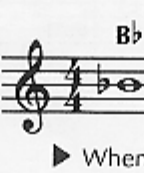
3 WHOLE LOTTA COUNTING



▶ Write in the counting and clap the rhythm before you play.

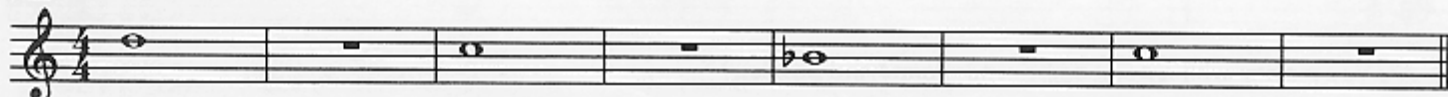
4 FOUR SCORE

Page 39

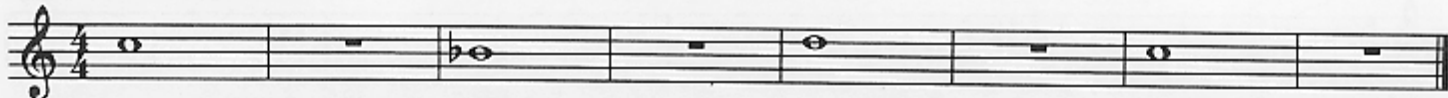


▶ When you see a page number followed by an arrow, *Excellerate* to the page indicated for additional studies.

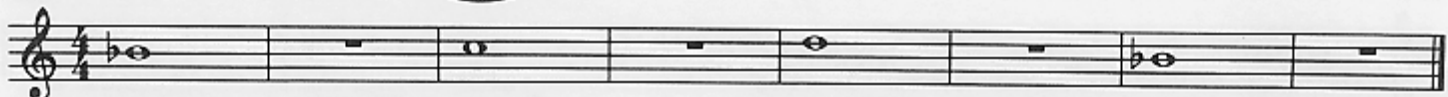
5 MIX 'EM UP



6 MELTING POT



7 BAND ON PARADE



▶ Lines with a medal are *Achievement Lines*. The chart on page 47 can be used to record your progress.

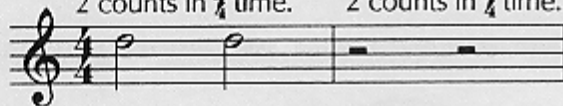
HALF NOTE



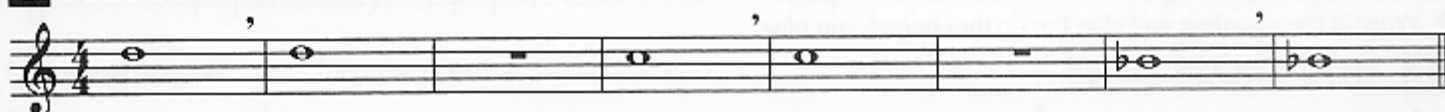
HALF REST



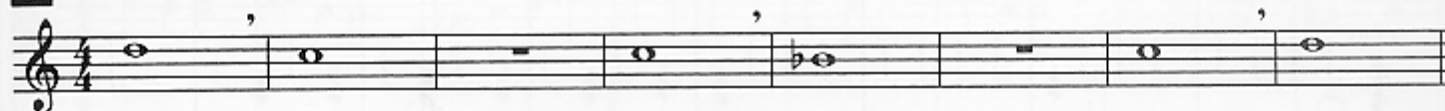
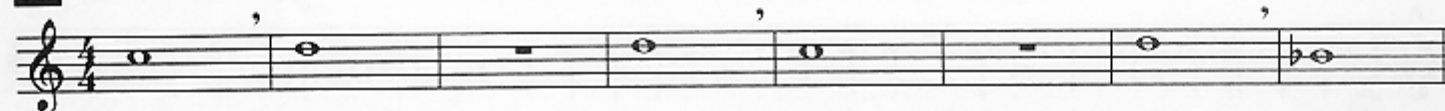
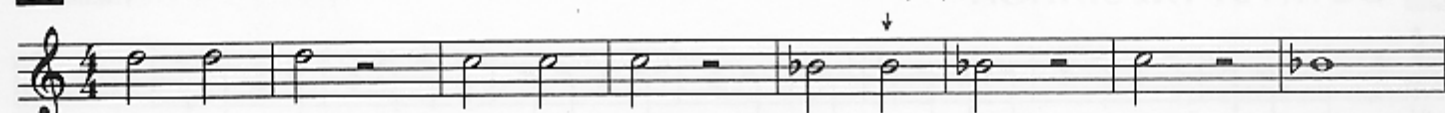
BREATH MARK

Each half note gets
2 counts in $\frac{4}{4}$ time.Each half rest gets
2 counts in $\frac{4}{4}$ time.

Take a breath.

8 A BREATH OF FRESH AIR

► Be sure to take a full breath of air.

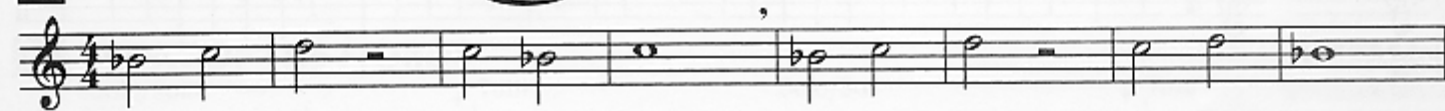
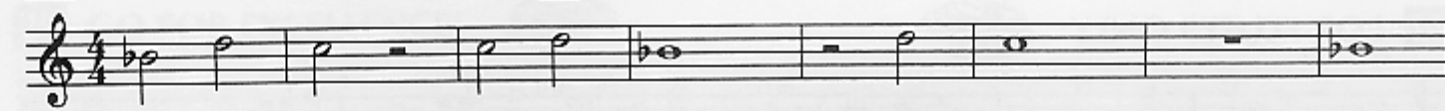
9 SIDE BY SIDE**10 TWO BY TWO****11 HALF THE PRICE**

► Write in the counting and clap the rhythm before you play.

12 CARDIFF BY THE SEA

Page 39

Welsh Folk Song

**13 TWO FOR THE SHOW - Duet****14 GO FOR EXCELLENCE!**

QUARTER NOTE



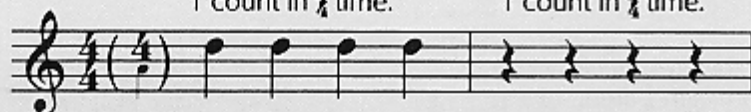
QUARTER REST



PHRASE

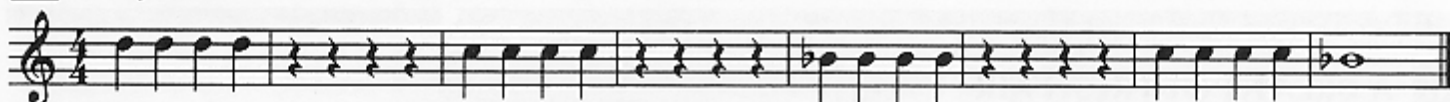
Each quarter note gets
1 count in $\frac{4}{4}$ time.

Each quarter rest gets
1 count in $\frac{4}{4}$ time.



A phrase is a musical thought or sentence. Phrases are usually four or eight measures long.

15 A QUARTER'S WORTH



► Write in the counting and clap the rhythm before you play.

16 HOT CROSS BUNS

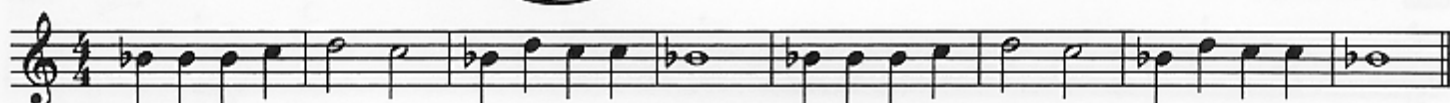
English Folk Song



17 AU CLAIRE DE LA LUNE



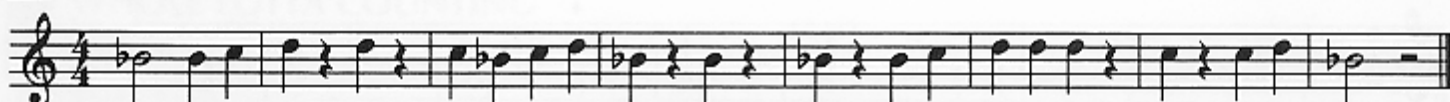
French Folk Song



► Draw in a breath mark at the end of each phrase.

18 DOWN BY THE STATION

Traditional

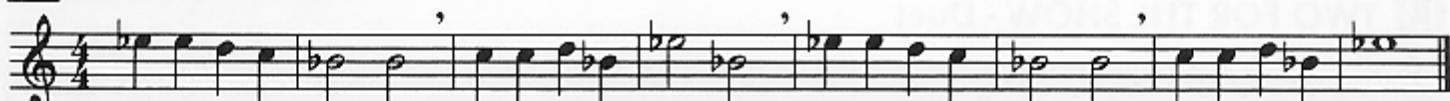


19 EASY STREET



20 COUNTRY WALK

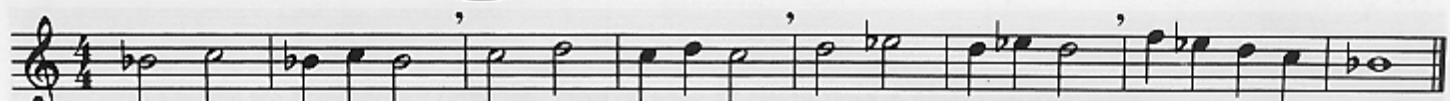
English Folk Song

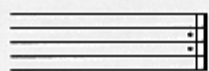


21 GETTIN' IT TOGETHER



22 FOR FLUTES ONLY



REPEAT SIGN

Repeat from the beginning.

COMMON TIME

$$C = \frac{4}{4}$$

Common time means the same as $\frac{4}{4}$ time.

FERMATA

Hold the note or rest longer than its usual value.

SOLO

One person plays.

SOLI

Whole section plays.

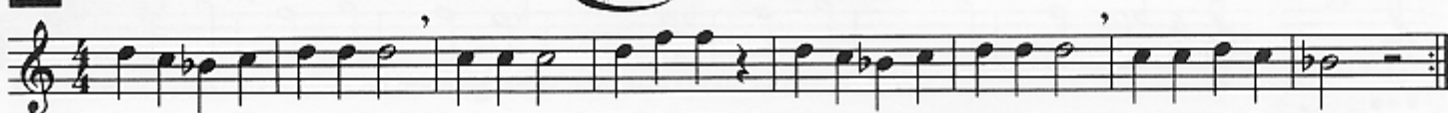
TUTTI

Everyone plays.

23 MERRILY WE ROLL ALONG

Page 39

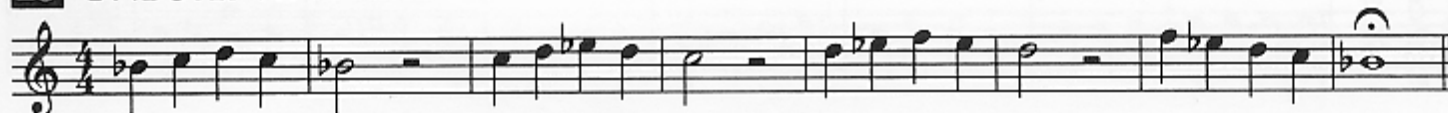
Traditional



► Write in the note names before you play.

24 LIGHTLY ROW- Duet

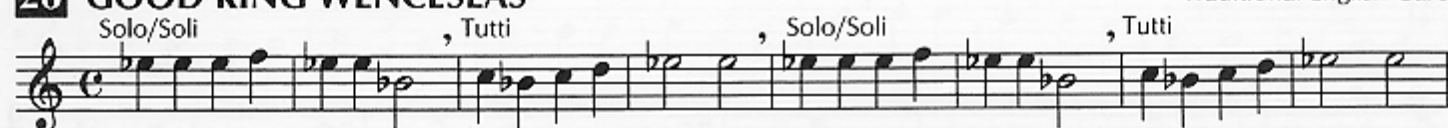
Traditional

**25 ONE STEP AT A TIME**

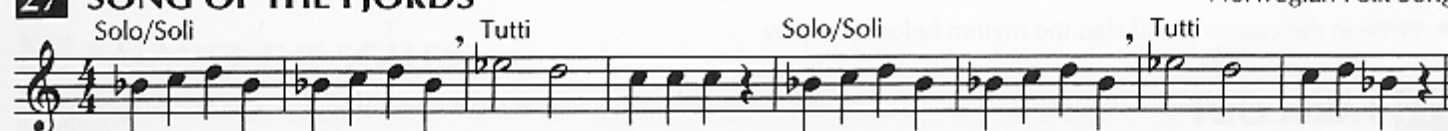
► Write in the counting and clap the rhythm before you play.

26 GOOD KING WENCESLAS

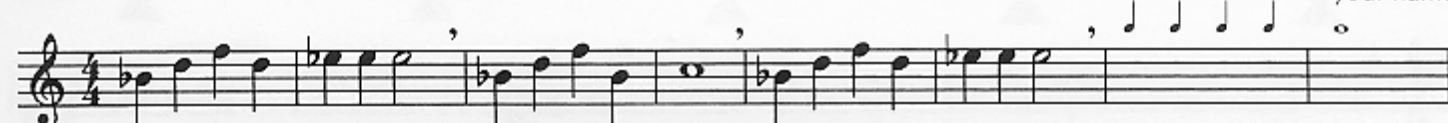
Traditional English Carol

**27 SONG OF THE FJORDS**

Norwegian Folk Song

**28** _____

Composer _____ your name



► Fill in the rest of the measures using the given rhythms and any notes you know. Title and play your composition.

29 GO FOR EXCELLENCE!